

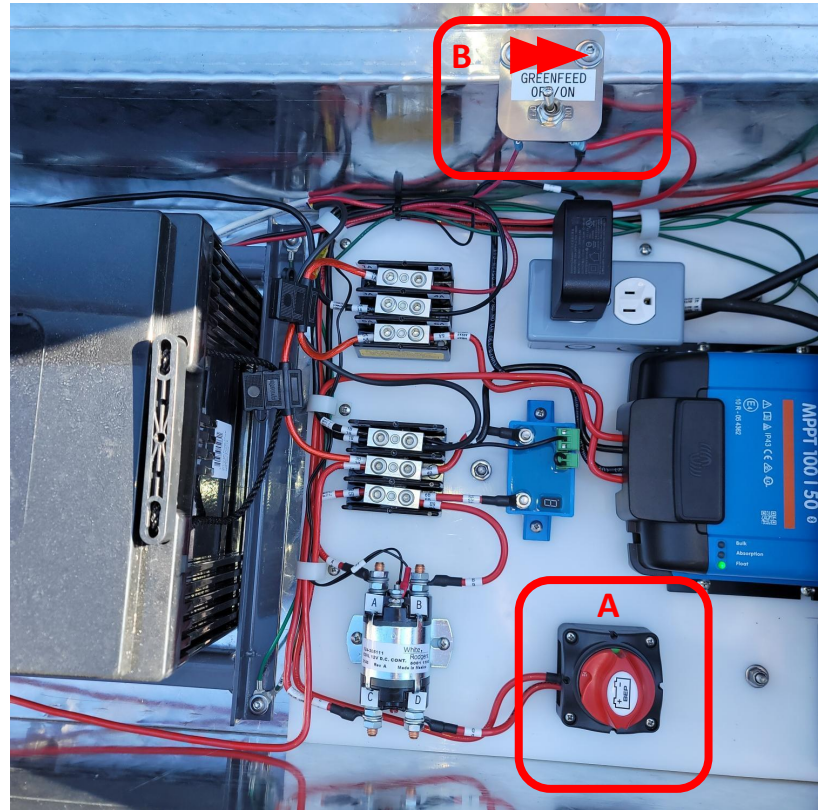
GreenFeed Pasture Trailer Travel Prep

You will need:

- 5/32 Allen wrench
- 9/16 wrench
- 5/16 socket
- Precision flathead screwdriver (small)
- Crescent wrench

1) Power off GreenFeed

- Turn battery cut-off switch to OFF (**RED**)(**A**).
- Switch GreenFeed power switch OFF(**B**).



2) Remove Auto Calibration System

****Do not transport with regulators installed, damage could occur****

- Close BOTH gas tanks
- Disconnect SPAN & ZERO harness from Auto Calibration Box
- Disconnect calibration gas lines from regulators
- Remove SPAN & ZERO regulators.
- Remove calibration tanks from trailer.



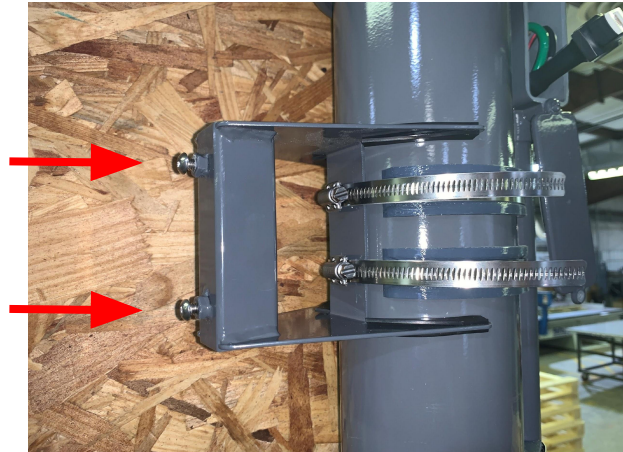
3) Disconnect Weather Station

- Locate Weather Station connector through cable gland on conduit (A).
- Disconnect wire from receptacle (B).
- Remove cable that is routed through cable gland and secure gland nut hand tight. (C)
- Place receptacle and excess wire in conduit box and install cover.



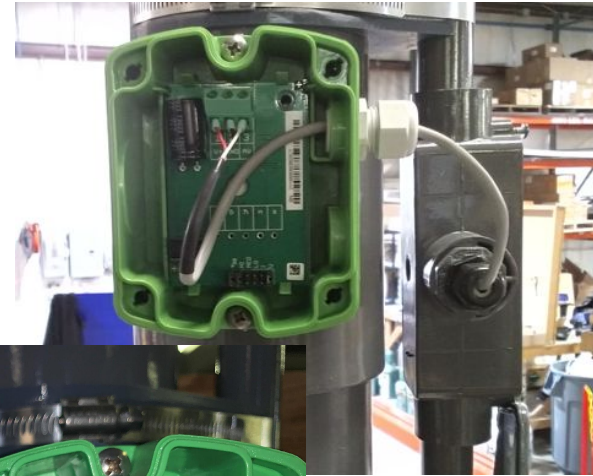
4) Remove Weather Station

- Remove Weather Station.
 - While holding Weather Station, loosen the two 5/32 allen head screws
 - Carefully lift Weather Station out of bracket
 - Tighten screws back into bracket



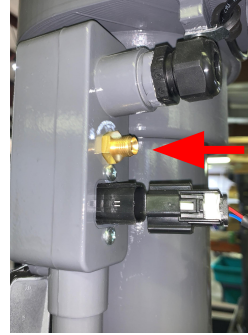
5) Remove Air Velocity Transmitter

- Remove Air Velocity Transmitter cover
- Using precision flat blade screwdriver, loosen connector and remove the wires.
 - 1 – RED
 - 2 – BLACK
 - 3 – WHITE
- Loosen gland nut and remove wire
- Hand tighten gland nut
- Carefully remove Air Velocity Transmitter from Chimney Pipe.

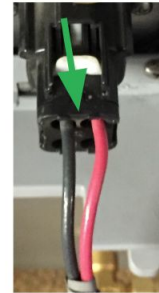


6) Remove Sample Tube and Disconnect Fan Power

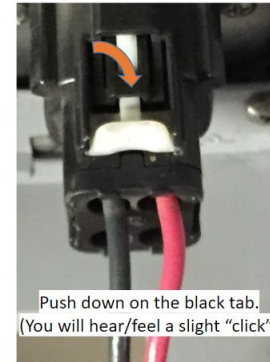
- Disconnect grey sample tubing from Conduit connection (**A**) by using a 9/16" wrench
- Disconnect Fan power molex connector
 - Pull/Slide connector back (**C**)
 - Pressing down on black tab in until you hear a click, and carefully pull connector off.



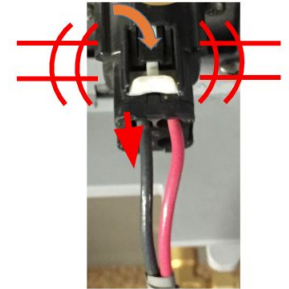
Disconnecting the Molex MX150 Connector



Pull the white tab out.



Push down on the black tab.
(You will hear/feel a slight "click")



While continuing to hold down the black tab, wiggle the connector back and forth while pulling outward on the connector.

7) Remove Fan

- Fan and Elbow are a slip / friction-fit design
- Firmly grab the fan assembly and lift until it is removed from the chimney pipe (A)



8) Remove Conduit / Chimney Pipe Clamp

- Loosen pipe clamp around and secure with 5/16" socket (B)
- Remove plastic spacer between Conduit and Chimney (A)



9) Disconnect Conduit Pipe Connections

- Disconnect Conduit Pipe connections inside GreenFeed:

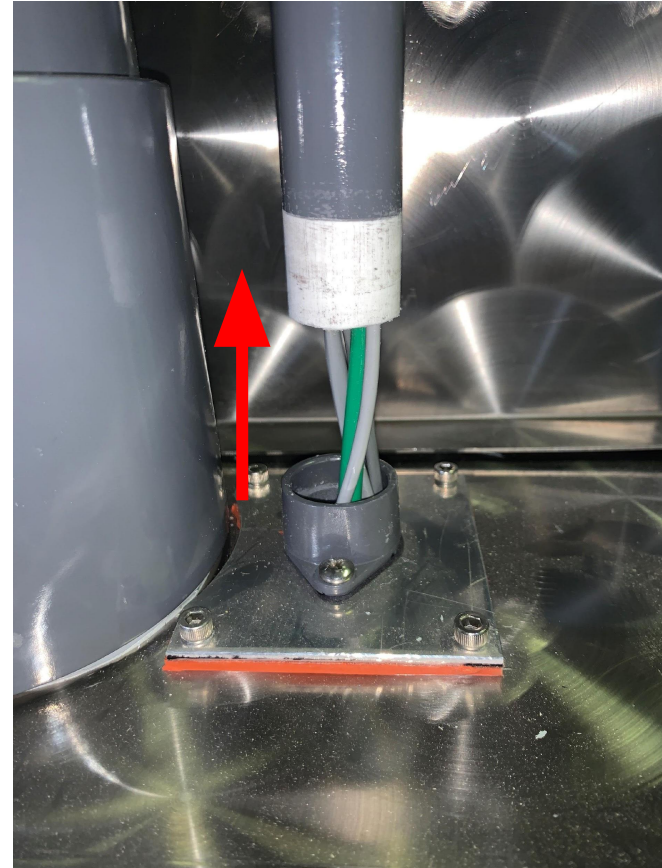
- Pull down Brass bell-shaped quick disconnect fitting then left to remove from connection. **(A)**
- Disconnect molex connector **(B)**
- Twist to disconnect connector labeled “wind” **(B)**
- Twist to disconnect connector labeled “flow” **(B)**

- Pull cellular modem antenna out of conduit (you can leave antenna connected to the wire). **(C)**



10) Remove Conduit Pipe

- Pipe is a slip / friction-fit design
- Firmly pull Conduit Pipe up until it is loose
- While holding Conduit Pipe, pull connections through in this order:
 - Connector labeled “wind”
 - Connector labeled “flow”
 - Black square molex connector
 - Brass bell-shaped quick disconnect fitting / green tubing



11) Remove Upper Chimney Pipe

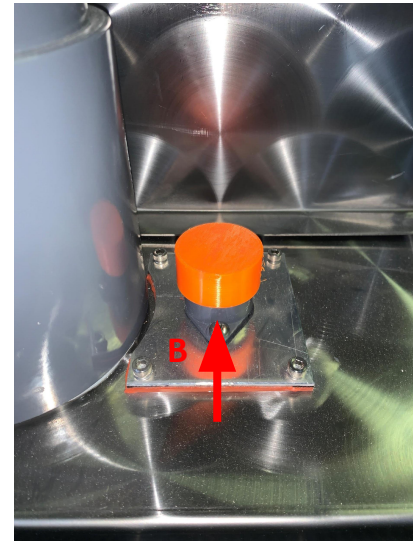
- Pipe is a slip / friction-fit design
- Firmly pull Chimney Pipe up until it is loose from the lower chimney pipe.



1) Install Chimney & Conduit covers

- Use something to cover BOTH openings to prevent water/snow entering into the GreenFeed.

- Examples are these covers, but you can use plastic baggies and a rubber band, just as long as they are secure and wont come off during transport.



Contact C-Lock if you have any questions

- Service and Support email support@c-lockinc.com
- Service and Support phone 605-791-5657 Ext. 3